

# Unit Penthouse 501

FLOOR 4, 5 & Mezzanine  
2 Bedroom, 2 Bath

2196 SQUARE FEET

# M

555 Roosevelt Avenue  
Central Falls, RI 02863  
Tel: 401.725.5550

#### Residences:

Waterfall Views  
Historic Details  
Spacious Open Floorplans  
Keyless Entry System  
Video Security System  
Zoned Climate Control  
Washer & Dryer Units

#### Kitchen & Living Spaces:

Open Kitchens  
Exotic Hardwood Floors  
Custom Lacquer Cabinetry  
Granite Countertops  
Jenn Air Floating Glass Appliances

#### Bathrooms:

Designer Fixtures  
Italian Tile  
Marble Countertops  
Custom Floating Vanities  
Custom Medicine Cabinets

#### Landscape:

Riverfront Promenade  
Abundant Greenspace  
Waterfall Observation Deck  
Private Gardens  
Recreational Boat Ramp  
Grill & Cookout Terrace

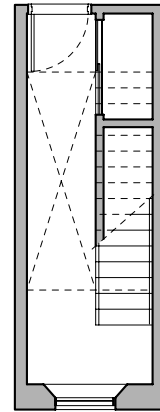
[www.MRESIDENTIAL.com](http://www.MRESIDENTIAL.com)

#### Modern Mill Living

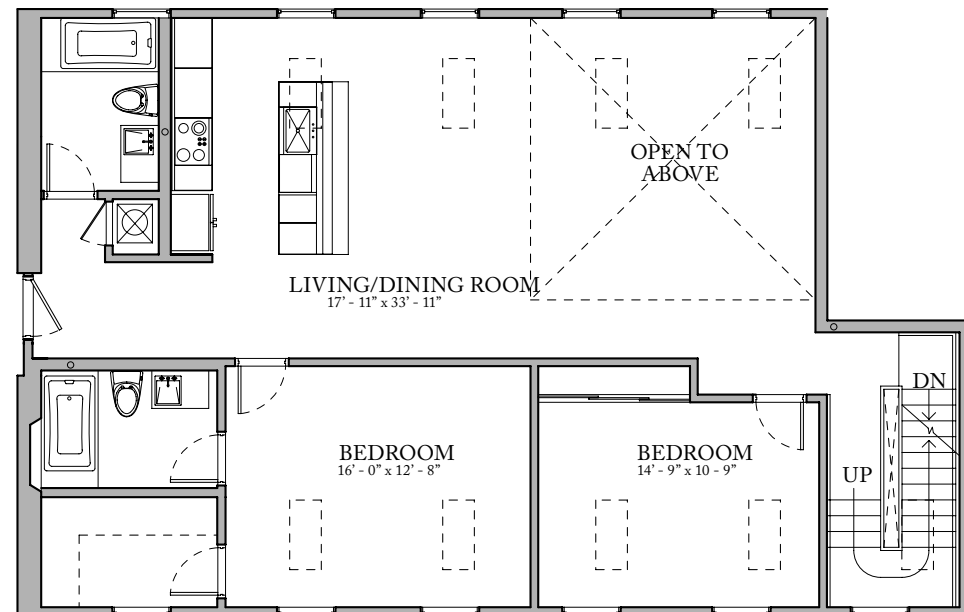
DEVELOPED BY: Tai O and Unisource International



The material contained herein is intended for informational purposes only and does not constitute an offering for sale. Information is accurate at the time it is presented but is subject to change and no warranty or representation is made as to present or future conditions of the M Residential project. At the time residences are offered for sale all purchasers will be presented with a detailed public condominium offering statement as required by Rhode Island law.



LOWER LEVEL



UPPER LEVEL